

B&C
COLLECTION

**OUTER
WEAR
/UNIT**

*Middle weight bomber jacket
with comfortable padding and concealed hood*



**B&C
CREW
BOMBER
DUO**

B&C CREW BOMBER /DUO

JM 961 & JW 962

PROTECTION

Waterproof (5000 mm) and windproof outer shell.

Quilted padding for extra warmth.

Ergonomic adjustable hood concealed in collar with elasticated cord and two easily adjustable stoppers.

Standing collar, full length internal stormflap and rib on cuffs and hem ensure wind protection.

Forward shoulder seams for better comfort and water protection.

MADE TO LAST

Double needle topstitching for extra durability.

Cuffs and hem in heavy polyester rib with elastane for better shape retention and durability.

Long lasting high quality tone-on-tone SBS zipper.

STYLE & FIT

Middleweight bomber style (jacket) with cotton feel heavy rib on cuffs and bottom hem.

Ergonomically designed for a comfortable fit.

Contemporary and robust look, designed to support corporate and promotional needs.

Matt fabric with soft handfeel for comfort and a premium look.

DECORATION

Easy access for decoration thanks to concealed zip opening at the bottom of the lining

Fabric tested for the following decoration techniques - screen printing, heat transfer, and embroidery.



B&C CREW BOMBER /WOMEN - JM 961

MIDDLE WEIGHT JACKET



Middle weight bomber jacket with comfortable padding and concealed hood

POLYESTER PONGEE

Outer layer: 100% polyester pongee

Inner layer: 100% polyester quilted taffeta

S - M - L - XL - 2XL - 3XL

1 pc/pack & 15 pcs/carton



Waterproof



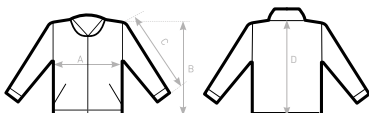
Windproof

- Contemporary cotton feel heavy rib on cuffs and bottom hem
- Standing collar and full length internal stormflap ensure wind protection
- Forward shoulder seams for better comfort and water protection
- Tone-on-tone, high quality SBS zippers
- 2 zipped hand pockets with overlap
- 1 inner wallet pocket with closing tabs
- Easy access for decoration thanks to the zip opening at the bottom of the lining
- Fabric tested for the following decoration techniques - screen printing, heat transfer, and embroidery.



**DUO
CONCEPT**

with B&C Crew Bomber /women



SIZES [cm]

B&C CREW BOMBER /MEN JM 961	XS	S	M	L	XL	2XL	3XL
A HALF CHEST	-	56	59	62	65	68	71
B BODY LENGTH FROM NECK POINT	-	68	70	72	74	76	78
C SLEEVE LENGTH	-	66	67,5	69	70,5	72	73,5
D CENTER BACK LENGTH	-	66,5	68,5	70,5	72,5	74,5	76,5

B&C CREW BOMBER /WOMEN - JW 962

MIDDLE WEIGHT JACKET



Middle weight bomber jacket with comfortable padding and concealed hood

POLYESTER PONGEE

Outer layer: 100% polyester pongee

Inner layer: 100% polyester quilted taffeta

XS - S - M - L - XL - 2XL

1 pc/pack & 10 pcs/carton



BLACK WITH WARM GREY LINING



NAVY WITH WARM GREY LINING



RED WITH WARM GREY LINING



DARK GREY WITH WARM GREY LINING



Waterproof



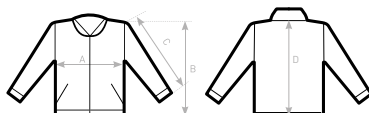
Windproof

- Contemporary cotton feel heavy rib on cuffs and bottom hem
- Standing collar and full length internal stormflap ensure wind protection
- Forward shoulder seams for better comfort and water protection
- Tone-on-tone, high quality SBS zippers
- 2 zipped hand pockets with overlap
- Easy access for decoration thanks to the zip opening at the bottom of the lining
- Fabric tested for the following decoration techniques - screen printing, heat transfer, and embroidery



DUO
CONCEPT

with B&C Crew Bomber /men



SIZES [cm]

B&C CREW BOMBER /WOMEN JW 962	XS	S	M	L	XL	2XL
A HALF CHEST	48	51	54	57	60	63
B BODY LENGTH FROM NECK POINT	60	62	64	66	68	70
C SLEEVE LENGTH	62	63,5	65	66,5	68	69,5
D CENTER BACK LENGTH	58	60	62	64	66	68

B&C CREW BOMBER /DUO - JM 961 & JW 962

EASY ACCESS SOLUTION

B&C Jackets are equipped with hidden entries to give easy access for decoration and **avoid any limitations** - that you would expect from a lining or padding - **without compromising look, finishing and quality.**

EASY ACCESS ON B&C CREW BOMBER /DUO JACKETS



Zip opening at the bottom of the lining.

DESIGNED TO BE DECORATED

Effective decoration areas have been **optimised** on every style, to make sure you can make your customer's brand or message stand out.

PRINT AREAS ON B&C CREW BOMBER /DUO JACKETS



Front panels



Sleeves



Back panel