



WW02W

## B&C #Set In /women

B&C  
BE INSPIRED

### Composition

B&C, now sourcing 100% more sustainable fibres

80% pre-shrunk ring-spun cotton (investing in Better Cotton\*) / 20% Recycled Polyester - RCS certified. French Terry.

*\*By buying this product from B&C you're supporting responsible cotton production through Better Cotton.*

### Size

XS, S, M, L, XL, 2XL, 3XL\*

### Packing

5 pcs/pack & 30 pcs/carton

### Weight

280 g/m<sup>2</sup>

### Color Note

HEATHER MID GREY, HEATHER NAVY, HEATHER ASPHALT, HEATHER RED, HEATHER DARK GREEN, HEATHER ROYAL BLUE & HEATHER PURPLE: 60% pre-shrunk ring-spun cotton - 40% Polyester  
HEATHER GREY: 92% pre-shrunk ring-spun cotton - 8% VISCOSE

\*Colours available in 4XL-5XL: Black Pure, Navy Blue, Heather Grey, Asphalt, Royal, Red, White

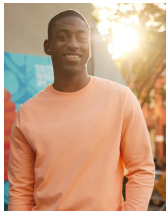
### Details

B&C, now sourcing 100% more sustainable fibres

Contemporary all purpose Crew neck for women available in 35 amazing colours made of 80/20 soft sweat fabric providing an ideal printing surface.

Your #bestallpurposesetin #women #idealprintability

- Essential classic Women Crewneck sweatshirt, clean and minimalistic for any occasion **#allpurposes**
- Comfortable dedicated women fit and body length for perfect look **#uptodate**
- Side seams ensure the best fit and a great feminine silhouette **#feminineshape**
- Identical colours (35) for men and women **#perfectduo**
- 7 sizes - XS to 3XL **#fitsall**
- Easy branding solution - B&C No Label Solution **#customiseme**
- Inside Single Jersey halfmoon in back to allow easy branding personalisation **#makemylifeeasy**
- Minimalist detailing suitable for many uses and end user requirements **#easystyling**



DUO  
CONCEPT

Want the same style for everyone?

**Try the B&C #Set In**

### Sustainability



### Care instructions



All our products are tested and approved using all main print techniques.

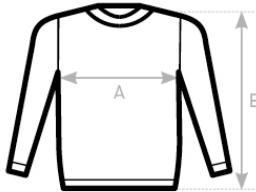
View on the website



Colors

 <b>001</b> WHITE	 <b>005</b> BLACK PURE (URBAN BLACK)	 <b>006</b> NAVY BLUE (URBAN NAVY)	 <b>004</b> RED	 <b>453</b> ROYAL
 <b>881</b> WINE	 <b>882</b> FOREST GREEN	 <b>669</b> ASPHALT	 <b>201</b> SOLAR YELLOW	 <b>233</b> PURE ORANGE
 <b>308</b> PINK FIZZ	 <b>331</b> CANDY PINK	 <b>443</b> HAWAIIAN BLUE	 <b>520</b> KELLY GREEN	 <b>351</b> RADIANT PURPLE
 <b>199</b> PALE YELLOW	 <b>305</b> PALE PINK	 <b>307</b> NUDE	 <b>123</b> DESERT	 <b>255</b> MELON ORANGE
 <b>339</b> LAVENDER	 <b>405</b> PURE SKY	 <b>672</b> GREY FOG	 <b>503</b> LIGHT JADE	 <b>502</b> SAGE
 <b>551</b> MILLENNIAL KHAKI	 <b>665</b> ELEPHANT GREY	 <b>610</b> HEATHER GREY	 <b>623</b> HEATHER MID GREY	 <b>625</b> HEATHER ASPHALT
 <b>617</b> HEATHER RED	 <b>616</b> HEATHER PURPLE	 <b>612</b> HEATHER ROYAL BLUE	 <b>611</b> HEATHER NAVY	 <b>618</b> HEATHER DARK GREEN

Size Guide



B&C #SET IN /WOMEN ww02w	XS	S	M	L	XL	2XL	3XL
	A	46,5	49	52	55	58	61,5
	B	61	63	65	67	68	69

View on the website

