



TM044

B&C Inspire V T /men

Single jersey



Composition

B&C, NOW sourcing 100% More Sustainable fibres for all cotton-based product
100% cotton - Organic or Organic in conversion certified Combed Ring Spun

Size

S, M, L, XL, 2XL, 3XL

Packing

10 pcs/pack & 50 pcs/carton

Weight

140 g/m²

Details

B&C, NOW sourcing 100% More Sustainable fibres for all cotton-based product

THE COOL & CONSCIOUS ULTRA PRINTABLE TEE

Offering an extremely soft handfeel and a fashionable cut that fits perfectly, the B&C Inspire V T /men features a V-neck, short sleeves and side seams. Its high quality organic and organic in conversion ring-spun combed cotton and the B&C No label solution ensure personalisation excellence.

For the perfect DUO, pair it with the B&C Inspire V T /women.

B&C Inspire Line is a complete collection of 14 styles, all made with the same quality and attention to design.

- Stripped back to the essentials, this short-sleeved T-shirt is clean and minimalist for any occasion.
- For long-lasting comfort, the neck seams are reinforced with soft binding.
- Side seams ensure the best fit and a masculine silhouette
- Cut in an easy, medium fit, it's the kind of tee you'll dress up and down
- Thin medium deep V collar rib for modern, up to date appearance
- For long-lasting comfort, the neck and shoulder seams are reinforced with soft binding.
- Minimalist cut and detailing suitable for many uses and any end user requirements.



Sustainability



Colors



Care instructions



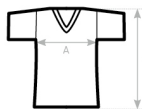
All our products are tested and approved using all main print techniques.



DUO
CONCEPT

Want the same style for everyone?

Try the B&C Inspire V T /women



| B&C INSPIRE V T/MEN TM 044 | XS | S | M | L | XL | 2XL | 3XL |
|-------------------------------|----|----|----|----|----|-----|-----|
| A HALF CHEST | - | 47 | 50 | 53 | 56 | 59 | 62 |
| B BODY LENGTH FROM NECK POINT | - | 70 | 72 | 74 | 76 | 78 | 80 |

B&C USES ONLY RESPONSIBLY SOURCED FIBRES FOR ALL T-SHIRTS, POLO SHIRTS AND SWEATSHIRTS.

View on the website

