

WU03K

B&C KING Zipped Hood

PST - Perfect Sweat Technology



Composition

B&C, now sourcing 100% more sustainable fibres

80% pre-shrunk ring-spun cotton, combed (investing in Better Cotton*)- 20% Recycled Polyester - RCS certified

**By buying this product from B&C you're supporting responsible cotton production through Better Cotton.*

Size

XS, S, M, L, XL, 2XL, 3XL, 4XL*

Packing

5 pcs/pack & 20 pcs/carton

Weight

280 g/m²

Color Note

HEATHER GREY: 75% pre-shrunk ring-spun cotton (investing in Better Cotton), combed - 21% polyester - 4% VISCOSE

HEATHER MID GREY: 60% pre-shrunk ring-spun cotton (investing in Better Cotton), Combed - 40% polyester

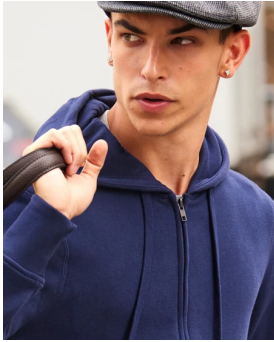
*Colours available in 4XL: Black Pure, Navy Blue, Heather Grey, Asphalt, Royal, Red, White

Details

B&C, now sourcing 100% more sustainable fibres

The environment friendly luxurious Zipped Hood thanks to exceptional softness, modern style and supreme printability offering 10 awesome colours and a wide range of sizes. The premium Zipped Hood at its best.

- Elegant, luxurious, comfortable & Environment friendly Zipped Hooded sweatshirt
- Side seamed style ensures the best fit and a masculine silhouette
- Identical colours (10) for men and women for a perfect duo
- 8 sizes - XS to 4XL
- Single Jersey lined hood for extra durability and perfect appearance
- Flat laced drawstrings with luxurious metal tips
- Qualitative long-lasting necktape
- Covered metal zip
- Single Jersey halfmoon in the back for premium look and extra durability



DUO
CONCEPT

Want the same style for everyone?

Try the B&C QUEEN Zipped Hood

Sustainability



Care instructions



All our products are tested and approved using all main print techniques.

View on the website



Colors

001
WHITE

005
BLACK PURE (URBAN BLACK)

006
NAVY BLUE (URBAN NAVY)

004
RED

453
ROYAL

369
DARK CHERRY

555
KHAKI

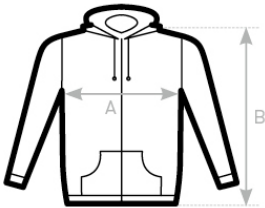
669
ASPHALT

610
HEATHER GREY

623
HEATHER MID GREY

003
NAVY

Size Guide



B&C KING ZIPPED HOOD WU03K	XS	S	M	L	XL	2XL	3XL	4XL
A HALF CHEST	49	52	55,5	59	62,5	66	70	74
B BODY LENGTH	68	70	72	74	76	78	79	80

