



DUO  
CONCEPT

Want the same style for everyone?

**Try the B&C ID.001 LSL**

PWI13

## B&C ID.001 LSL /women

Piqué



### Composition

B&C, now sourcing 100% more sustainable fibres

100% pre-shrunk ring-spun cotton, combed (investing in Better Cotton\*)

*\*By buying this product from B&C you're supporting responsible cotton production through Better Cotton*

### Size

XS, S, M, L, XL, 2XL, 3XL

### Packing

10 pcs/pack & 50 pcs/carton

### Weight

180 g/m<sup>2</sup>

### Color Note

Heather Grey: 90% pre-shrunk ring-spuncotton /10% viscose

### Details

B&C, now sourcing 100% more sustainable fibres

Basic by B&C - The 100% cotton piqué long-sleeved polo shirt designed and engineered to offer the right style at the right price for large quantities.

Designed to complement the B&C ID.001 LSL basic poloshirt, the B&C ID.001 LSL /women has a classic feminine cut, available in 7 sizes to flatter every silhouette. Its typical 1×1 rib knit collar, 2-button reinforced placket and 8 matching colours with the B&C ID.001 LSL unisex style create the perfect basic long-sleeved poloshirt duo.

For the Perfect Duo, pair it with the B&C ID.001 LSL /men

### Long-sleeved Piqué polo shirt for women:

- 1×1 rib knitted collar
- Necktape for better shape retention
- 2-button placket reinforced with fusible interlining
- Feminine cut, regular fit
- Side seams for perfect fit
- Wide range of sizes to fit everyone: XS-3XL

### Sustainability



### Care instructions



All our products are tested and approved using all main print techniques.

View on the website



Colors

001  
WHITE

002  
BLACK

450  
ROYAL BLUE

003  
NAVY

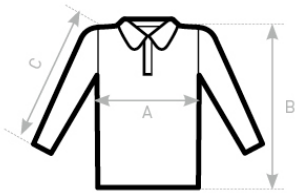
610  
HEATHER GREY

235  
ORANGE

004  
RED

540  
BOTTLE GREEN

Size Guide



B&C ID.001 LSL /WOMEN PW I13	XS	S	M	L	XL	2XL	3XL
A HALF CHEST	41	44	47	50	53	56	59
B BODY LENGTH FROM NECK POINT	62	63,5	65	66,5	68	69,5	71
C SLEEVE LENGTH	58	59	60	61	62	63	64

View on the website

