



DUO
CONCEPT

Want the same style for everyone?

**Try the B&C ID.001 LSL
/women**

PUI12

B&C ID.001 LSL

Piqué

B&C
BE INSPIRED

Composition

B&C, now sourcing 100% more sustainable fibres

100% pre-shrunk ring-spun cotton, combed (investing in Better Cotton*)

**By buying this product from B&C you're supporting responsible cotton production through Better Cotton*

Size

XS, S, M, L, XL, 2XL, 3XL, 4XL

Packing

10 pcs/pack & 50 pcs/carton

Weight

180 g/m²

Color Note

Heather Grey: 90% pre-shrunk ring-spuncotton /10% viscose

Details

B&C, now sourcing 100% more sustainable fibres

Basic by B&C - The 100% cotton piqué long-sleeved polo shirt designed and engineered to offer the right style at the right price for large quantities.

Made of 100% pre-shrunk ring-spun cotton piqué, the B&C ID.001 LSL poloshirt features a 1×1 rib knitted collar and 2-button reinforced placket. Available in 8 colours (in duo with the women style) and 8 sizes, it's the ideal basic long-sleeved poloshirt.

For the Perfect Duo, pair it with the B&C ID.001 LSL /women

Long-sleeved Piqué polo shirt

- 1×1 rib knitted collar
- Necktape for better shape retention
- 2-button placket reinforced with fusible interlining
- Regular fit
- Side seams for perfect fit
- Wide range of sizes to fit everyone: XS-4XL

Sustainability



Care instructions



All our products are tested and approved using all main print techniques.

View on the website



Colors

001
WHITE

002
BLACK

450
ROYAL BLUE

003
NAVY

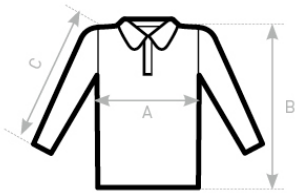
610
HEATHER GREY

235
ORANGE

004
RED

540
BOTTLE GREEN

Size Guide



B&C ID.001 LSL PUI12	XS	S	M	L	XL	2XL	3XL	4XL
A HALF CHEST	45,5	49	52,5	56	59,5	63	66,5	70
B BODY LENGTH FROM NECK POINT	67	69,5	72	74,5	77	79,5	82	84,5
C SLEEVE LENGTH	63	64	65	66	67	68	69	70

