



DUO  
CONCEPT

Want the same style for everyone?

Try the B&C #E190 LSL

TW08T

## B&C #E190 LSL /women

Single jersey

B&C  
BE INSPIRED

### Composition

B&C, now sourcing 100% more sustainable fibres

100% pre-shrunk ring-spun cotton (investing in Better Cotton\*)

*\*By buying this product from B&C you're supporting responsible cotton production through Better Cotton.*

### Size

XS, S, M, L, XL, 2XL, 3XL\*

### Packing

10 pcs/pack & 50 pcs/carton

### Weight

185 g/m<sup>2</sup>

### Color Note

Sport Grey: 85% pre-shrunk ring-spun cotton - 15% Viscose

\*Colours available in 3XL

### Details

B&C, now sourcing 100% more sustainable fibres

Your #190bestchoice #longsleeves #tshirt #women

The B&C #E190 LSL /women T-shirt is modern, long sleeves and with side seams #feminineshape. It features a contemporary look and the legendary qualitative 190GSM single jersey offered by B&C for more than 20 years now. This T-shirt is one of the 10 styles in the B&C #E line. This line offers softness, comfort and #premium printing surface. Choosing this line you will get: great #contemporaryfit in an #amazing palette of #55 colours, all in duo.

For the perfect DUO, pair it with the B&C #E190 LSL.

### #Style/Fit

- Mainstream contemporary fit #allpurposes
- Side seams construction #feminineshape
- Thin collar rib to highlight modern neck opening #uptodate
- Body length allowing to be worn in and out #freedomofmovement
- Same 10 colours for men & women #perfectduo
- 7 sizes - XS to 3XL #fitsall
- Satin label #ultrasofttouch

### #Quality/Handfeel

- Made of 100% cotton #protectmyskin #Oeko-Tex100
- Resistant fabric and soft handfeel #RINGSPUN
- Unchanged proven B&C quality fabric #20years
- Middle weight fabric 190 gsm #extraresistant

### Sustainability



### Care instructions



All our products are tested and approved using all main print techniques.

View on the website



Colors

001  
WHITE

002  
BLACK

003  
NAVY

004  
RED

450  
ROYAL BLUE

620  
SPORT GREY

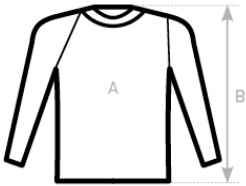
670  
DARK GREY

231  
URBAN ORANGE

352  
URBAN PURPLE

370  
BURGUNDY

Size Guide



B&C #E190 LSL /WOMEN TW 08T	XS	S	M	L	XL	2XL	3XL	
	A HALF CHEST	41	44	47	50	53	56	59
	B BODY LENGTH FROM NECK POINT	58	60	62	64	66	68	70

View on the website

